

## Turn your garden waste into a vitamin pill for your garden

Reusing your food and garden waste is a great way to make more room in your red top and green waste bins. The Discovery Centre at Wollongong Botanic Garden offers a range of workshops to residents in dealing with reuse of food and garden waste, including worm farming, composting, bokashi composting and chook care.

Call us today on 4227 7111 to learn more or visit [www.wollongong.nsw.gov.au](http://www.wollongong.nsw.gov.au)



## Additional green waste bin

If you find that one green waste bin isn't enough for your needs, you can purchase an additional green waste bin from Council\*. You can also take additional or oversized green waste (greater than 50cm long and no greater than 15cm in diameter) to Whytes Gully Waste and Resource Recovery Park. Charges apply.

\*Only the owner of a residential property can apply for an additional bin.

## Dispose of garden waste lawfully

Dumping garden waste into bushland and reserves is illegal.

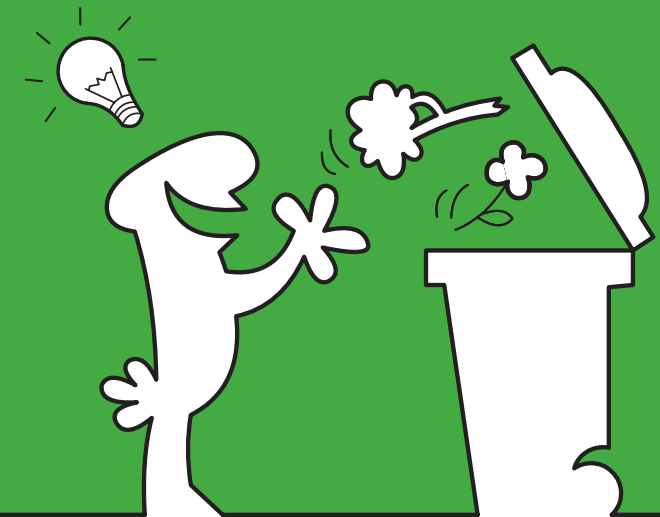
Illegally dumped green waste can:

- ✓ destroy native bushland and animal habitat by introducing disease, weeds and pests
- ✓ increase the risk of bushfires
- ✓ attract more illegal dumping and other criminal activities
- ✓ decrease community pride and discourage people from visiting affected areas
- ✓ cost local and state governments and the community more than \$10 million a year in prevention and cleanup costs;
- ✓ attract on the spot fines up to \$1500 or Court action with significant penalties.

If you witness illegal dumping, we encourage you to report it to Council to help us identify sites, hold dumpers responsible for their actions, and reduce the cost to the community.

If you suspect someone is illegally dumping waste, contact our Customer Service Centre on 4227 7111.

# Getting the green light on managing your garden waste



Enquiries: Phone (02) 4227 7111

 PRINTED ON RECYCLED PAPER

**REMONDIS**

WCC©1323262.12



## Getting the green light on managing your garden waste

Garden waste that can go into your green top bin includes:

- ✓ lawn clippings
- ✓ flowers
- ✓ garden prunings
- ✓ leaves and twigs
- ✓ branches less than 50cm in length and 7.5cm in diameter
- ✓ timber off-cuts that are untreated, unpainted with no nails, and less than 50cm in length and 7.5cm in diameter.

When placing these items in your green waste bin, don't tie things up or put items in plastic bags. Don't overfill or pack too much into your bin either.

The following items should not be placed in your green waste bin:

- ✗ plastic bags
- ✗ plastics including garden hoses
- ✗ rubbish
- ✗ foam and styrofoam
- ✗ building materials
- ✗ soil, clay and rocks
- ✗ paper and cardboard
- ✗ vegetable, fruit or other food scraps – this isn't a composting system
- ✗ chemically treated timber
- ✗ painted or stained timber
- ✗ glass, ceramic or plastic plant pots.

## Is your green waste bin weighing you down?

If your green waste bin is full to the brim with moist grass clippings, chances are it will be too heavy for the mechanical arm of the collection vehicle to lift, and your bin may not be able to be emptied. The weight of your green waste bin should be no heavier than 80kg.

Try these helpful tips to reduce the weight of your bin:

- ✓ mow high – take no more than 1/3 of the grass height off at each mowing
- ✓ use a mulching mower
- ✓ add grass clippings to your compost heap instead of putting them in your green waste bin.

If you need to place grass in your green waste bin, try to leave the lid open on your bin and let the air help to dry out the grass for a few hours. This will help reduce the moisture content in your bin by up to 25%.



**Garden waste is not included in the on call Household Cleanup Service.**

## Does your green waste bin have bad breath?

Unemptied green waste bin can really smell, attracting blowflies and other insects while producing greenhouse gases that contribute to global warming.

Even if you only have minimal garden waste in the bin, we recommend you put your green waste bin out for collection every fortnight. This helps sustain our environment and reduce the need for regular cleaning.

## Bulky Green Waste

Residents and businesses can take bulky green waste to Whytes Gully Waste and Resource Recovery Park for reprocessing\*. All garden waste must be separated and deposited to the green waste processing area. It is then turned into mulch, compost and soil products. Raw **mulch** is available to Wollongong Council residents **free of charge**.

\*Fees apply

